



Extractor Rescue Sleds
1776 Country Lane Escondido, CA 92025 USA
Tel. 1-760-809-0355 Fax 1-760-432-0646
Email: xmandan@extractorsled.com
Website: www.extractorsled.com

ROPE REELS



GT450/600ft

GT310/300ft



GT310 with
300ft (91m)
5/16" 8mm
throwline



Extractor offers rope rescue reel packages to compliment our RIVERx Ice/Water Rescue boards.

We use Professional Strength and Duty Reels, made of water proof and corrosion resistant plastics and rubber, making them ideal for use in ice, water and salt environments. We use the Schill GT 310 or 450 reels, large enough to accommodate 91 or 200m, (300 to 656 ft) 8mm (5/16") or 11mm (3/8") line. The GT450 reels are used by professional tv and film production crews, loaded with fiber optic cable, and routinely dropped from chair lift heights to run cable along ski slopes. The Manufacturer tells me they last for years. Made in Austria.

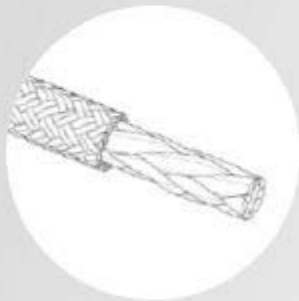
Our standard reel is outfitted with:

The NFPA throwline, by New England (Teufelberger) Ropes. The NFPA Throwline is a double braid that features a polypropylene cover with a Dyneema® core. This extremely strong and versatile rope has a good hand and a high visibility cover. Designed to be light, strong, and easily packable, the result is a product that is extremely strong and floats indefinitely. Certified to NFPA 1983:2006 for throwlines.



yellow-red

NFPA 1983:2006



Braid: 16





Features

Meets the NFPA Specification for a floating water throwline
Double Braid Construction
soft hand
good grip
easily packable

NFPA-Throw Line

Diameter [mm] 8,0

Diameter [inch] 5/16

Weight [g/m] 29,8

Weight [lbs/100'] 2.00

min. Breaking strength [daN] 1220

min. Breaking strength [lbf] 2750

Extractor Rope Rescue Reels come standard with 300 ft (91 meters) GT310 or 600 ft (183 meters) GT450 of this line.

Each Rope Reel comes with a plastic float to keep the weighted, carabineer connection end from sinking and easily retrievable.

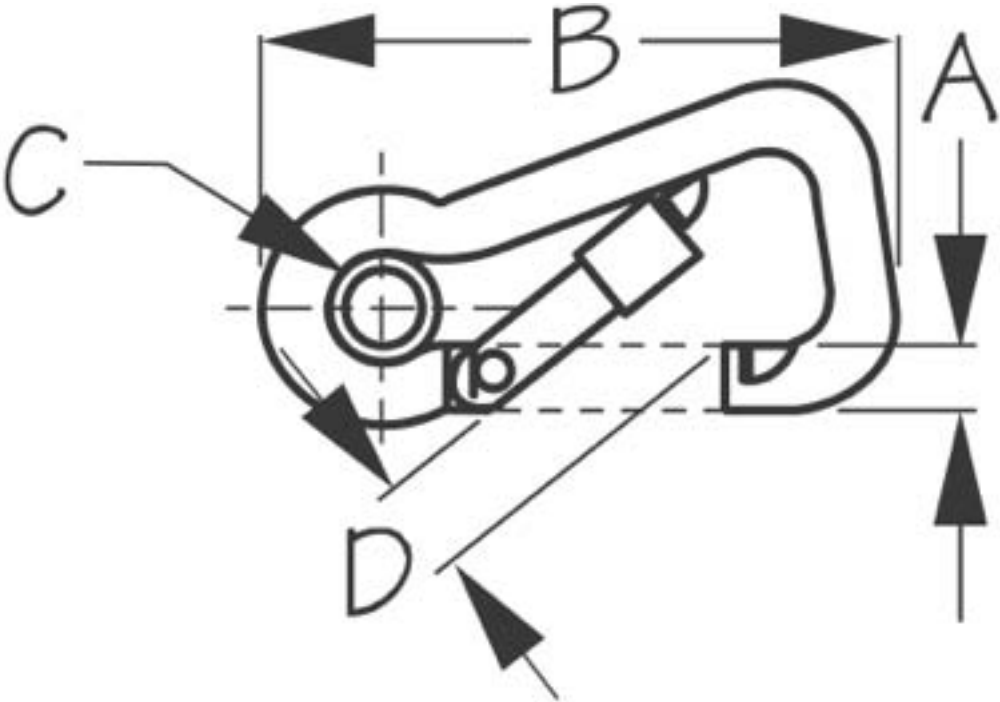


Brand: KwikTek F-5R

These durable ultrasonically welded plastic floats are great for pools, ski ropes, anchor lines, marker buoys and crab traps. They're economically priced, yet built to last.

Size: 5 inches long x 3 inches diameter with a 0.5 inch hole in the center

Each Rope Reel comes with a 316 stainless steel carabineer with locking gate.



A	B	C	D	B.S. (lb.)	Weight
3/8"	4"	9/16"	11/16"	3,600	.30 lb.

Each RIVERx Rescue Board which is purchased and packaged with a rope reel, is outfitted with one length of 2 m (6 ft) length of 1 inch (26mm wide) tubular nylon webbing and one 3/8 inch (11mm) diameter wire stainless steel ring for towing and attaching to rope reel. This mounts to the front of the RIVERx Board using the thru holes in the front of the board.

**Wire Diameter 3/8" (11mm)
Ring Diameter 2" (54mm)
Breaking Strength 6,200 lb.
Working Load 1,550 lb
Weight .20 lb.**



